

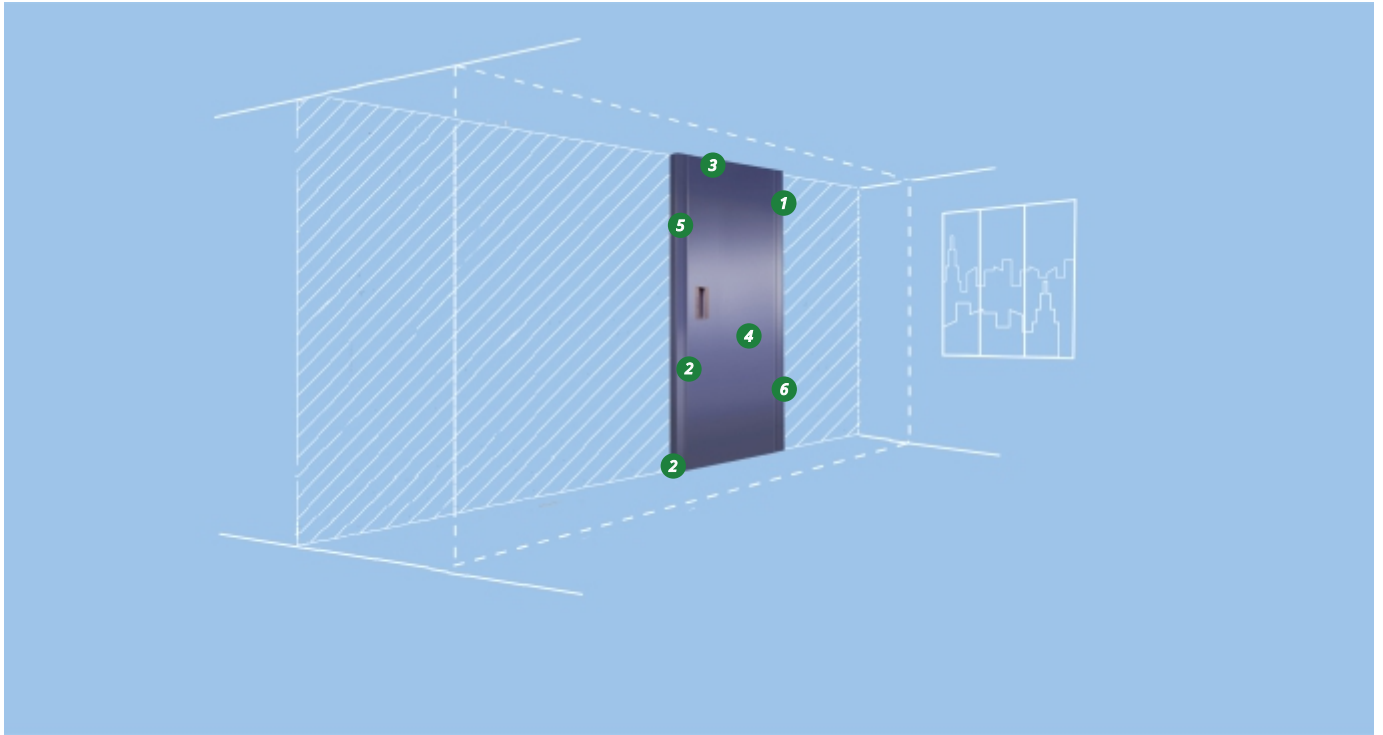
# NORMA DOORS SOUND INSULATION



[www.normafactory.com](http://www.normafactory.com)

**NORMA**  
movable walls and folding partitions

# SOUND INSULATION AND NONFLAMMABLE DOORS



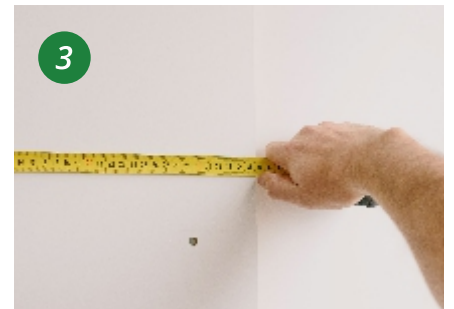
## Built-in door closer

Magnetic inserts at the end of the door act as a door closer. The door closes on its own



## Seals and retractable doorsill into the floor

Silicone seals and a retractable doorsill do not let in odors and provide a sound insulation up to 47 dB



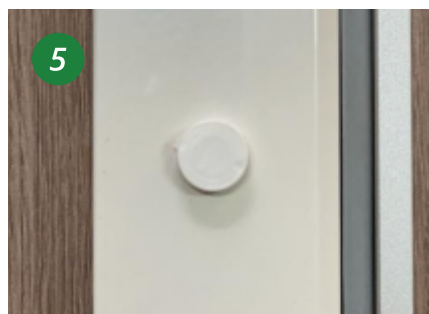
## Suitable for non-standard openings

Customized manufacture of doors allows you to create a door according to given dimensions



## Finishing with nonflammable materials of KO(15) class

All surface finishes available, including nonflammable.



## No visible fasteners

All self-tapping screws are fitted with decorative caps



## Compensation for uneven openings

Vertical telescopic profiles compensate for uneven walls

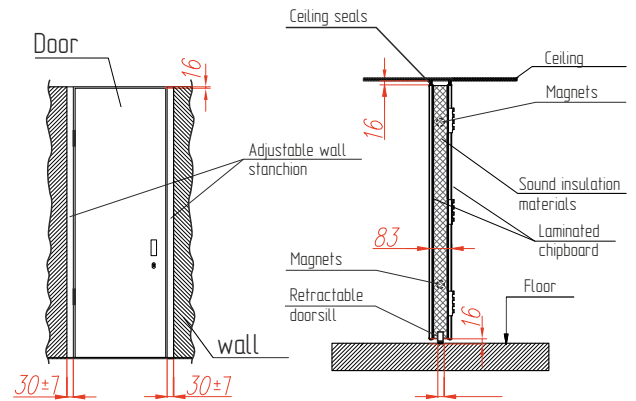
## PRODUCT DESCRIPTION

The sound insulation door NORMA consists of a door leaf, vertical full extension end caps, hinges, draught seals and high-quality fittings. The door leaf is a sandwich panel made of two boards of facing material in aluminum supporting frame, filled with sound insulation materials. The magnets installed at the end faces of the door leaf and full extension end caps act as a door closer. The magnets installed at the ends of the door leaf and Adjustable wall stanchion act as a door closer. Doors are great for installation in offices, schools, kindergartens, medical facilities, studios, cinemas and hotels.

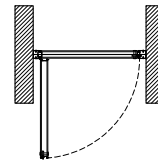
Also, they will go well in interiors with Norma folding structures. Standard door: 2800 x 1000 mm, EGGER surface material, 40 dB.

**Finishing material:** EGGER laminated chipboard, veneer, RAL coloring, wallpapers, prints, glass inserts, felt and cloth, nonflammable magnesium oxide wallboard K0 (15 minutes) and much more.

## HORIZONTAL AND VERTICAL SECTION OF THE DOOR

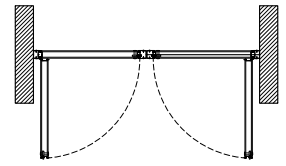


700/800/900



Single-leaf door

1400/1600/1800



Two-leaf door

## WIDE RANGE OF APPLICATIONS FOR NORMA DOORS

- Schools
- Nursery schools
- Offices
- Conference rooms
- Server rooms
- Medical institutions
- Gyms
- Dancing halls
- Hotels
- Conference halls

## BENEFITS

- In-house production in Saint Petersburg
- The price of a standard door is 30,000 rubles (platbands and extensions are not included into the set)
- Production time: 3 days
- Installation during one day
- Warranty up to 3 years
- Sound insulation up to 47 dB
- Keeps odors out
- Can be washed with chlorine solutions
- Handles can be of any shape
- Built-in door closer
- Retractable doorsill to the floor

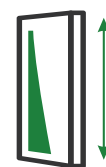
## TECHNICAL SPECIFICATIONS



- Sound insulation up to 47 dB



- Door thickness: 83 mm



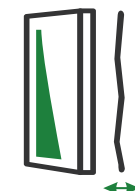
- Door height: 2,000 - 5,900 mm.



- Weight: 18 - 39 kg/m<sup>2</sup>



- Door width: 500 - 1,500 mm.



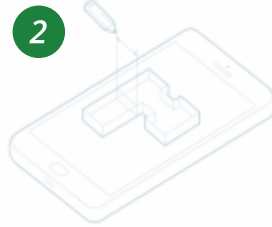
- Compensation for uneven walls: 15 mm.

# WHY CHOOSE **NORMA** PRODUCTS?

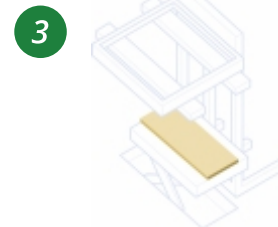
## WE WORK ACCORDING TO A CLEARLY FUNCTIONED PROCEDURE



**Request**



**Calculation and drawing  
in 2 hours**



**Production from 3 days**



**Delivery from 1 day**



**Mounting from 1 day**



**3-year warranty**



- IN-HOUSE PRODUCTION
- QUALITY SERVICE
- WORKING SINCE 2003
- AFFORDABLE PRICES
- OWN UNIQUE DEVELOPMENTS
- HIGHLY QUALIFIED PERSONNEL

## CONTACTS

**Manufacturer  
NORMA Factory**

**NORMA Factory LLC.** 2 Voskova str., letter Я, Sestroretsk, Saint Petersburg, 197706

**+7 (812) 245-25-00**

**[www.normafactory.com](http://www.normafactory.com)**

**[info@normafactory.com](mailto:info@normafactory.com)**

**Exclusive distributor  
in Russia and  
the Republic  
of Belarus**

**FOLDIN Company LLC** 2 Voskova str., 2-B, Sestroretsk, Saint Petersburg, 197706; 102 Mira ave., of. 102, build.38, Moscow, 129626.

**Calls within Russia**

**+7 (800) 775-26-91**

**Saint Petersburg**

**+7 (812) 604-60-51**

**Moscow**

**+7 (495) 085-05-80**

**[www.foldin.ru](http://www.foldin.ru)**

**[info@foldin.ru](mailto:info@foldin.ru)**

**Exclusive distributor  
in the Republic  
of Kazakhstan**

**Qazaqwall**

**Calls within Kazakhstan +7 (717) 272-74-05**

**[www.qazaqwall.kz](http://www.qazaqwall.kz)**

**[info@qazaqwall.kz](mailto:info@qazaqwall.kz)**